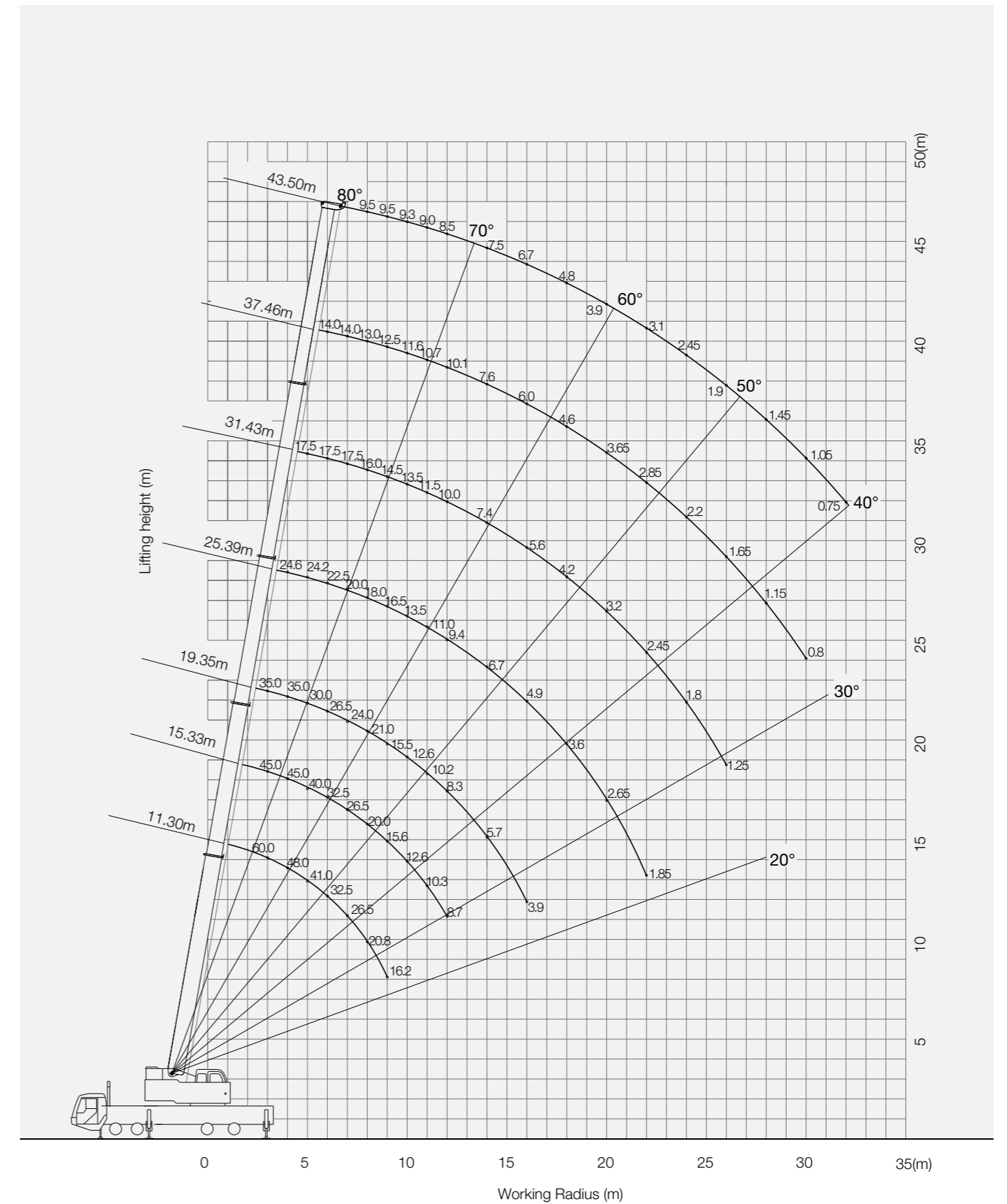


Type	Item	Parameter	
Capacity	Max. lifting capacity	60 t	
Dimensions	Overall length	13700 mm	
	Overall width	2750 mm	
	Overall height	3750 mm	
	Axle distance	Axle-1,2: 1450 mm Axle-2,3: 4200 mm Axle-3,4: 1350 mm	
Weight	Overall weight	42000 kg	
	Axle load	Axle load-1,2: 16000 kg Axle load-3,4: 26000 kg	
	Rated power	250 kW/ 2100 rpm	
	Rated torque	1425 N.m/ 1200-1500 rpm	
Traveling	Max.traveling speed	83 km/h	
	Turning radius	Min.turning radius	11 m
		Min.turning radius of boom head	14 m
	Wheel formula	8 × 4	
	Min.ground clearance	295 mm	
	approach angle	19 °	
	Departure angle	14 °	
	Max.gradeability	42%	
Fuel consumption per 100km	≤ 43 L		
Main Performance Data	Temperature range	- 20 ° ~ + 40 °	
	Min.rated range	3 m	
	Tail slewing radius of swingtable	4.065 m	
	Boom section	5	
	Boom shape	U-shaped	
	Max.lifting moment	Base boom	2009 kN·m
		Full-extend boom	1050.6 kN·m
		Full-extend boom+jib	521.1 kN·m
	Boom length	Base boom	11.3 m
		Full-extend boom	43.5 m
Full-extend boom+jib		59.5 m	
Outrigger span (Longitudinal×Transversal)	6 × 7.2 m		
Jib offset	0 °, 15 °, 30 °		
Working speed	Max.single rope lifting speed of main winch (no load)	125 m/min	
	Max.single rope lifting speed of auxiliary winch (no load)	125 m/min	
	Full extension/retraction time of boom	100 / 120 s	
	Full lifting/descending time of boom	60 / 80 s	
	Slewing speed	0~2.0 r/min	
Aircondition	Aircondition in up cab	Cooling	
	Aircondition in low cab	Heating/Cooling	

STC600S Working Ranges of Boom



Unit:Kg

STC600S Boom Load Chart

Radius (m)	Outrigger extended, over side and rear (4.6T fixed counterweight)											Radius (m)
	11.3	15.33	17.34	19.35	23.38	25.39	29.41	31.43	35.45	37.46	43.5	
3.0	60000	45000	24600	35000								3.0
3.5	55000	45000	24600	35000	17500							3.5
4.0	48000	45000	24200	35000	17500	24600						4.0
4.5	45000	43000	24000	33000	17500	24600	14000					4.5
5.0	41000	40000	22500	30000	17500	24200	14000	17500				5.0
5.5	36000	36000	21000	28000	17500	24000	14000	17500	9500			5.5
6.0	32500	32500	20000	26500	16500	22500	13500	17500	9500	14000		6.0
6.5	29500	29500	19000	25000	16000	21000	12900	17500	9500	14000		6.5
7.0	26500	26500	18000	24000	15500	20000	12400	17500	9500	14000		7.0
7.5	23200	23500	17000	22000	15000	19000	11800	16700	9500	13500		7.5
8.0	20800	20000	16500	21000	14000	18000	11300	16000	9300	13000	9500	8.0
9.0	16200	15600	16000	15500	13000	16500	10500	14500	9000	12500	9500	9.0
10.0		12600	14600	12600	12500	13500	9600	13500	8500	11600	9300	10.0
11.0		10300	12100	10200	12000	11000	8900	11500	7800	10700	9000	11.0
12.0		8700	10200	8300	10600	9400	8300	10000	7300	10100	8500	12.0
14.0			7500	5700	8100	6700	7300	7400	6300	7600	7500	14.0
16.0				3900	6300	4900	6400	5600	5500	6000	6700	16.0
18.0					5000	3600	5300	4200	4700	4600	4800	18.0
20.0					4000	2650	4300	3200	4100	3650	3900	20.0
22.0						1850	3500	2450	3600	2850	3100	22.0
24.0							2800	1800	3050	2200	2450	24.0
26.0							2300	1250	2450	1650	1900	26.0
28.0									2050	1150	1450	28.0
30.0										1650	800	30.0
32.0											750	32.0
Telescoping Condition(%)												
Modes	I,II	I	II	I	II	I	II	I	II	I	I,II	Modes
2 section boom	0	50	0	100	0	100	0	100	0	100	100	2 section boom
3 section boom	0	0	25	0	50	25	75	50	100	75	100	3 section boom
4 section boom	0	0	25	0	50	25	75	50	100	75	100	4 section boom
5 section boom	0	0	25	0	50	25	75	50	100	75	100	5 section boom
Number of lines	12	10	6	8	4	6	4	4	3	4	3	Number of lines

Notes:

1. Values listed in the table refer to rated lifting capacity measured at flat and solid ground under the lever state of the crane;
2. Value above heavy line shall be determined by strength of the crane and under this line shall be determined by stability of the crane;
3. Working radius listed in the load chart is the actual radius with load;
4. Rated load values determined by stability shall comply with ISO 4305;
5. Rated lifting capacity listed in the table included weights of lifting hooks (610kg of main hook and 90kg of auxiliary hook)and hangers;
6. With the 5th outrigger extended, the value listed in the table shall be applicable for 360°operation;
7. Rated lifting capacity with pulley at boom tip shall not exceed 4000kg. If jib is applied, the rated lifting capacity of the boom shall be deducted by 2300kg.
8. If actual boom length and range are between two values specified in the table, larger value will determine the lifting capacity.

STC600S Working Ranges of Jib

