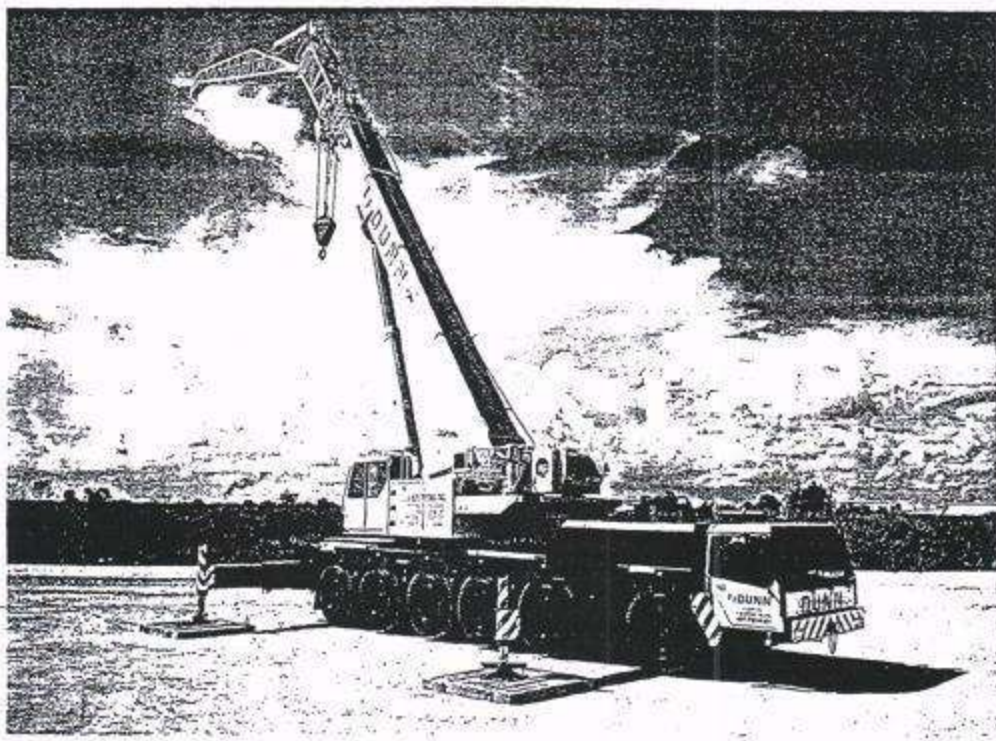


BHADORIA ENGINEERING SERVICES PVT. LTD.

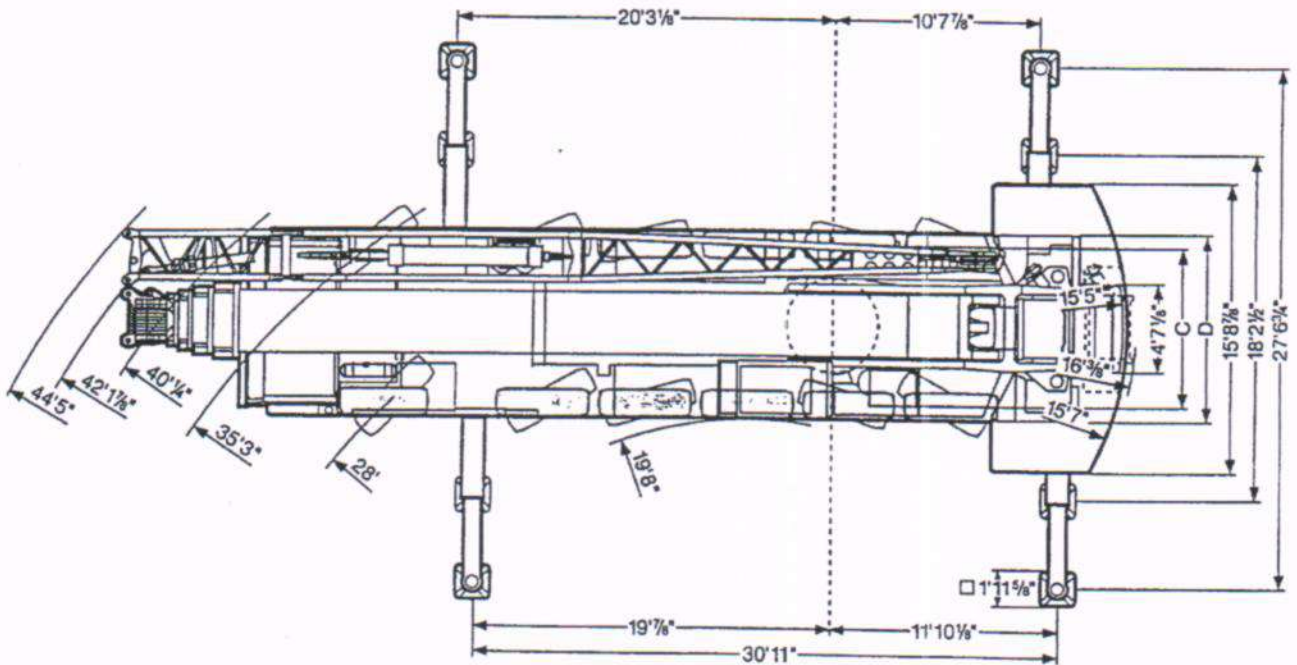
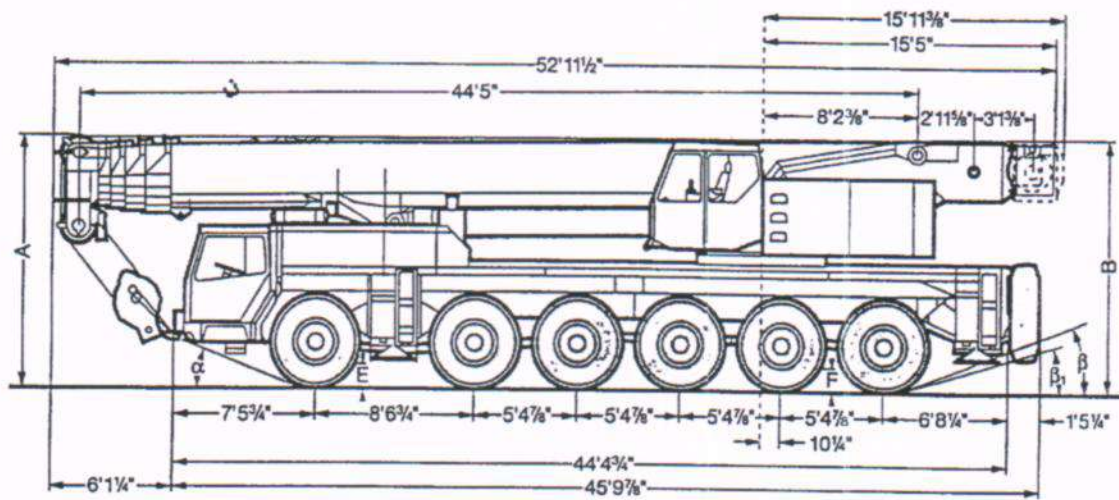
Telescopic Truck Crane


LTM 1160/1



Dimensions.

LTM 1160/1



	Dimensions									
	A	A 5 1/4"*	B	C	D	E	F	α	β	β ₁
20.5 R 25	12'11 1/2"	12'5 3/4"	12'10 1/2"	8'7 3/4"	10'5"	14 1/4"	18 1/2"	21°	19.5°	15°

* lowered

Lifting capacities at telescopic boom.

LTM 1160/1



44 ft - 171 ft



360°



101 500 lbs

85%

ft	44 ft	59 ft	73 ft	88 ft	102 ft	117 ft	132 ft	146 ft	160 ft	171 ft	ft	
10	381	346									10	
11	349	328									11	
12	325	311	295								12	
13	307	294	280								13	
14	291	280	268	238	194	158					14	
15	278	267	257	233	194	158	168				15	
16	263	255	250	226	184	158	167				16	
17	250	243	241	221	192	156	164				17	
18	237	232	230	216	190	152	160	136			18	
20		211	210	204	184	145	152	130			20	
22		192	190	188	175	138	146	125	108	77.5	22	
24		175	174	173	167	131	141	120	105	77.5	24	
26		160	159	158	159	124	134	120	102	77.5	26	
28		149	147	146	147	118	129	115	99	77.5	28	
30		138	136	135	136	113	123	110	95.5	75	30	
32		128	127	126	127	108	118	106	91.5	72.5	32	
34			118	117	119	104	112	101	88	70	34	
36			111	110	111	99.5	106	94	82	67.5	36	
38			103	102	103	95.5	100	90	82	65	38	
40			96	95	96.5	92	94.5	80	79	63	40	
45			83	81.5	82.5	84	80.5	76	61	61	45	
50				71	71.5	75.5	69.5	69.5	64.5	58	50	
55				62	62	67	60.5	60.5	58.1	51.7	55	
60					54.2	59.3	53.1	53.4	47.8	47.8	60	
65					47.8	52.2	47	47.5	44.3	44.3	65	
70					41.9	46.4	42	42.5	41.2	41.2	70	
75					34	38.3	37.4	38.2	38.4	38.4	75	
80							33.2	34.4	34.7	34.7	80	
85							29.8	31	31.4	31.7	85	
90							27.8	27.8	28.6	29.9	90	
95								24.8	28.3	27.1	95	
100								22.2	23.4	26.9	100	
105									21.1	25.6	105	
110									19	24	110	
115									17.1	22.3	115	
120										18.7	120	
125										17	125	
130										15.4	130	
135										14	135	
140											140	
145										14	145	
150										12.8	150	
155											155	
I	0	46	92	92	0	92/0	92	92	0	92	92	I
II	0	0	0	46	92	92/0	92	92	92	92	92	II
III	0	0	0	0	46	0/92	46	92	92	92	92	III
% IV	0	0	0	0	0	0/92	0	0	92	92	92	IV %

over rear

TAB 89044 / 89045

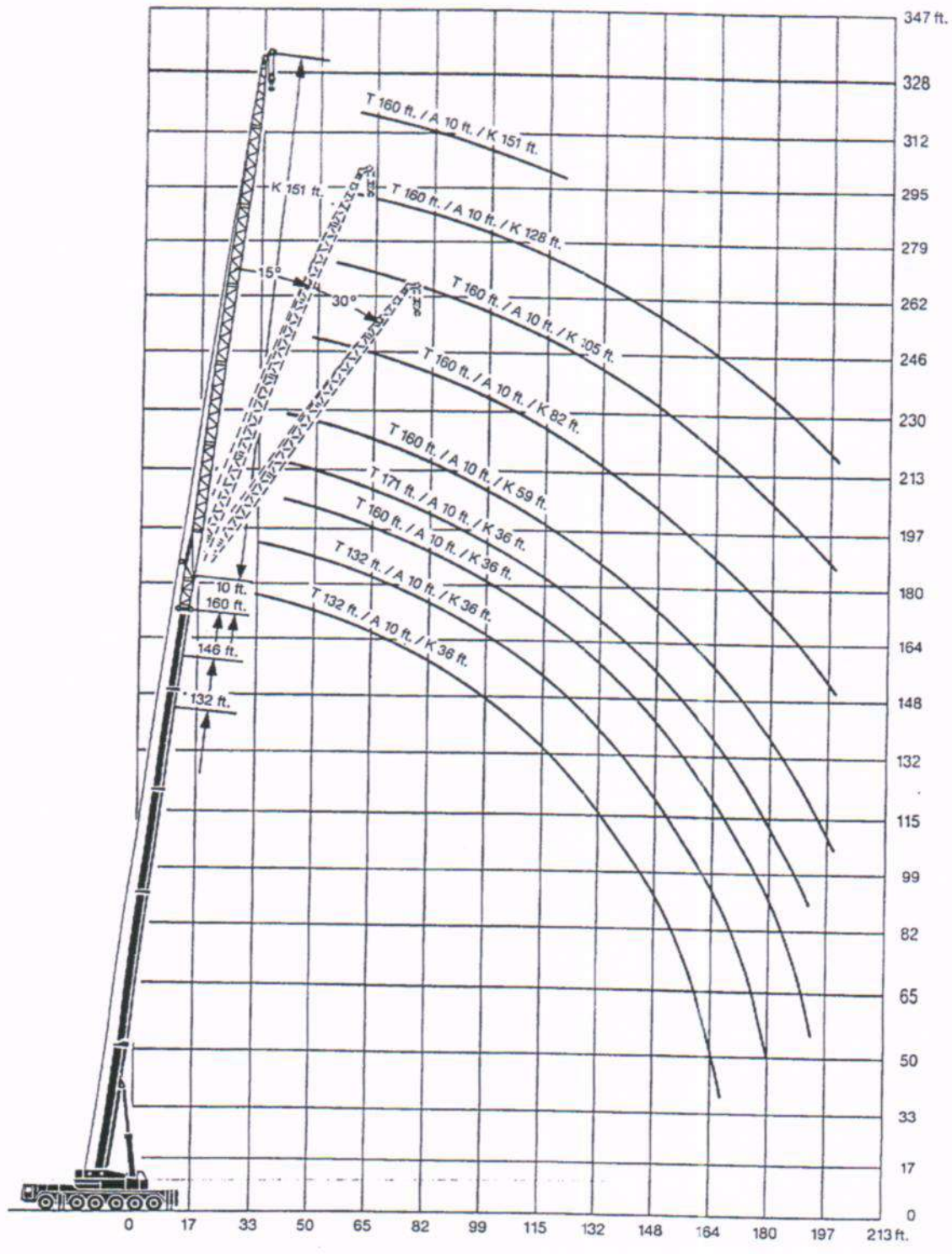
Remarks referring to load charts.

- The tabulated lifting capacities do not exceed 85 % of the tipping load.
- The crane's structural steelwork is in accordance with DIN 15018, part 3. Design and construction of the crane comply with DIN 15018, part 2, and with F. E. M. regulations.
- The 85 % overturning limit values take into account wind force 5 = wind speed 20 mph.
- Lifting capacities are given in kips.
- The weight of the hook blocks and hooks must be deducted from the lifting capacities.
- Working radii are measured from the slewing centreline.
- The lifting capacities given for the telescopic boom only apply if the folding jib is taken off.
- Lifting capacities are subject to modifications.
- Lifting capacities above 309 kips only with additional pulley block and special equipment.

Lifting capacities are given

Lifting heights.

LTM 1160 / 1



Lifting capacities at the luffing folding jib.

LTM 1160/1



ft	44 ft*						73 ft*						102 ft*						ft	
	36 ft	59 ft	82 ft	105 ft	128 ft	151 ft	36 ft	59 ft	82 ft	105 ft	128 ft	151 ft	36 ft	59 ft	82 ft	105 ft	128 ft	151 ft		
10	68.5																			10
11	64																			11
12	60																			12
13	56.7																			13
14	53	48.1					64													14
15	49.6	45					59.8													15
16	47.1	42.7					56.2													16
17	44.8	40.7	35.3				53.2													17
18	42.5	39	34.2				50.4													18
20	38.2	35.7	32.2				45.2	39.7					52.7							20
22	34.7	32.9	30.3				41.4	36.5					48.2							22
24	31.5	30.5	28.4	23.2			38.1	33.7	29.2				43.9	36.6						24
26	28.7	28.4	26.7	22			35.3	31.3	27.6				39.8	34.2						26
28	26.7	26.6	25	20.8	17.2		32.7	29.2	26.1	21.4			36.1	32.1						28
30	24.8	24.9	23.4	19.6	16.3		30.3	27.3	24.7	20.4			32.5	30.1	24.7					30
32	23	23.4	21.9	18.6	15.4		28.1	25.6	23.3	19.3			29.2	28.2	23.5					32
34		22	20.6	17.6	14.6	11.8		24.1	22.1	18.4	14.6		26.4	26.4	22.4	17.8				34
36		20.7	19.3	16.7	13.9	11.3		22.6	20.9	17.6	14		23.6	24.7	21.4	17				36
38		19.3	18.1	15.7	13.1	10.8		21.1	19.7	16.8	13.3		21.2	23	20.4	16.3				38
40		18.1	16.9	14.8	12.4	10.3		19.8	18.6	16	12.7	9.8		21.4	19.4	15.6	12.5			40
45		15.5	14.1	13	11	9.2		17	16.2	14.4	11.4	8.9		17.7	17.2	13.9	11.4			45
50		13.2	11.9	11.3	9.8	8.2		14.4	14.1	12.9	10.3	8.1		14.6	15.1	12.5	10.3	7.3		50
55			10.1	9.8	8.7	7.4		12	12.3	11.5	9.2	7.4		11.8	13.1	11.2	9.3	6.5		55
60			8.5	8.5	7.6	6.7			10.7	10.3	8.3	6.7			11.4	10	8.6	5.9		60
65			7.4	7.4	6.7	6.1			9.4	9.3	7.4	5.9			9.9	8.9	7.6	5.2		65
70			6.5	6.5	5.9	5.4			8.2	8.4	6.6	5.3			8.4	7.8	7	4.6		70
75			5.9	5.8	5.3	4.9			7.2	7.5	6	4.8			7	6.8	6.4	4.2		75
80				5.2	4.7	4.5				6.6	5.4	4.3			5.8	5.8	5.6	3.7		80
85				4.6	4.2	4.1				5.9	4.9	3.9			4.9	4.9	4.9	3.2		85
90				4.3	3.6	3.6				5.1	4.3	3.5				4.3	4.3	2.8		90
95				3.9	3.2	3.2				4.5	3.8	3.2				3.8	3.8			95
100					2.8	2.9				4	3.3	2.8				3.2	3.3			100
105																		2.9		105
110																		2.5		110
I			0						92						92					I
II			0						0						92					II
III			0						0						0					III
% IV			0						0						0					IV %

ft	132 ft*						146 ft*						160 ft*						171 ft	ft
	36 ft	59 ft	82 ft	105 ft	128 ft	151 ft	36 ft	59 ft	82 ft	105 ft	128 ft	151 ft	36 ft	59 ft	82 ft	105 ft	128 ft	151 ft	36 ft	
30	38.3	28.8																		30
32	36.2	27.6																		32
34	34.2	26.5	19.7				30.7	22.4	16.3											34
36	32.1	25.3	19.1				29.6	21.9	16											36
38	30	24.1	18.4				28.6	21.3	15.6											38
40	28	22.9	17.7	14.4			27.5	20.7	15.3	11.7										40
45	22.8	20	16.1	13.3			24.6	19.2	14.5	11.2			27.1	18.4	12.9					45
50		17	14.6	12.3	9.3		20.4	17.3	13.6	10.7	7.4		23.5	17.5	12.7	9				50
55		14.6	13	11.4	8.7	6.4		15.6	12.8	10.2	7.1	4.9		16.5	12.5	8.9	5.6			55
60		12.8	11.4	10.5	8.1	6		14.1	11.8	9.6	6.9	4.7		15.4	12.2	8.7	5.6	3.4		60
65		10.9	9.9	9.4	7.6	5.6		12.1	10.6	8.9	6.6	4.6		13.4	11.3	8.5	5.6	3.4		65
70			8.7	8.4	7	5.3		10.4	9.5	8.3	6.3	4.3		11.5	10.2	8.2	5.6	3.4		70
75			7.5	7.5	6.5	5			8.4	7.6	6	4.2			9.2	7.7	5.6	3.4		75
80			6.4	6.7	5.9	4.8			7.3	6.9	5.7	4.1			8.3	7.1	5.5	3.4		80
85			5.9	6.1	5.4	4.4			6.6	6.3	5.3	3.8			7.3	6.6	5.1	3.2		85
90			5.1	5.4	5	4			5.8	5.8	4.9	3.4			6.4	6.2	4.8	2.8		90
95				4.7	4.5	3.7			4.9	5.2	4.4				5.5	5.7	4.4			95
100				4.3	4	3.3				4.7	4					5.2	4			100
105				3.9	3.6	2.9				4.2	3.6					4.6	3.8			105
110				3.5	3.3	2.7				3.8	3.4					4.1	3.5			110
115					2.9					3.3	3					3.5	3.1			115
120					2.6						2.7						2.8			120
I			92						92						92				100	I
II			92						92						92				100	II
III			92						92						92				100	III
% IV			0						46						92				100	IV %

* with 10 ft adapter additional