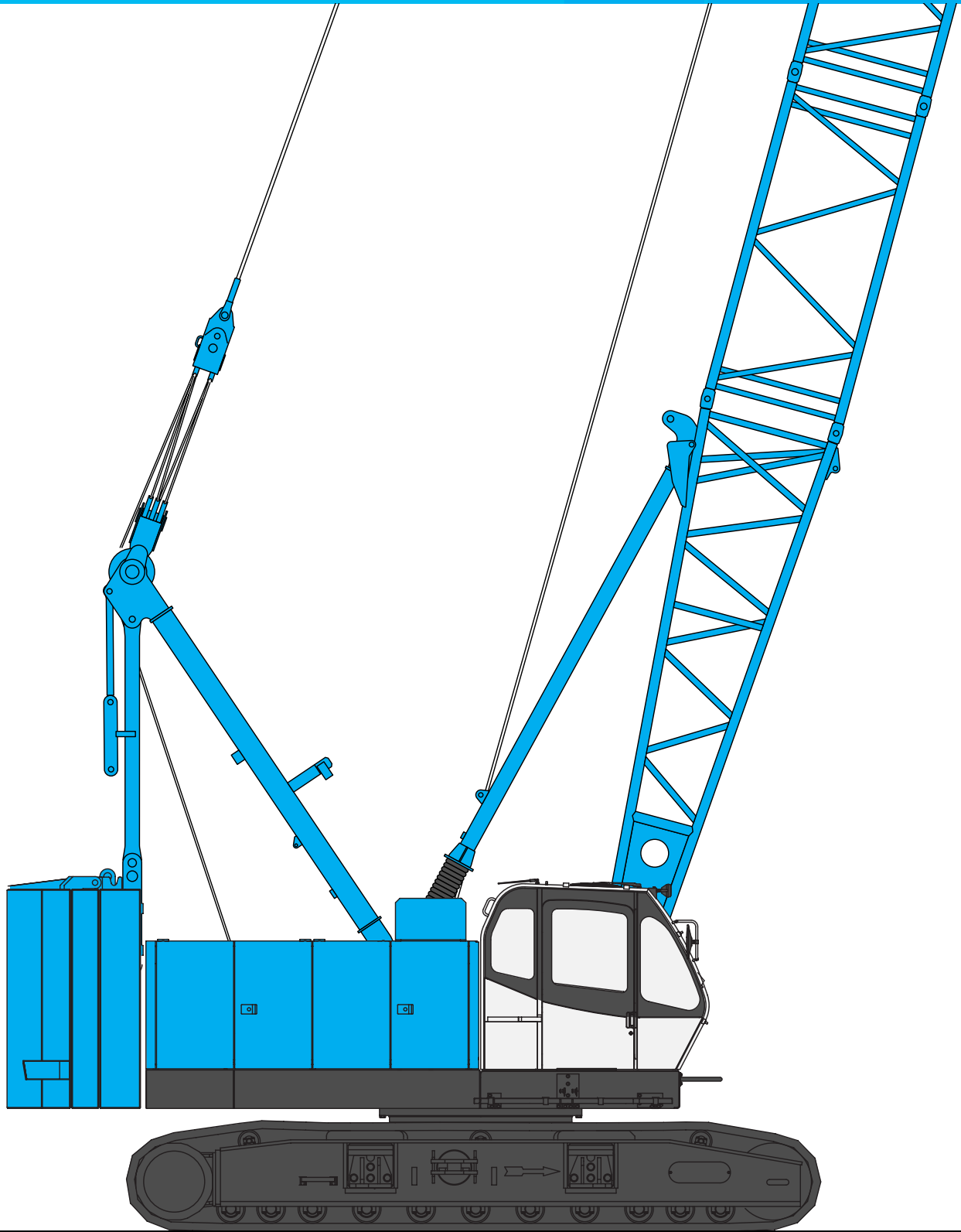


**KOBELCO**

**HYDRAULIC CRAWLER CRANE**  
***CKL1000i***

Model: CKL1000i



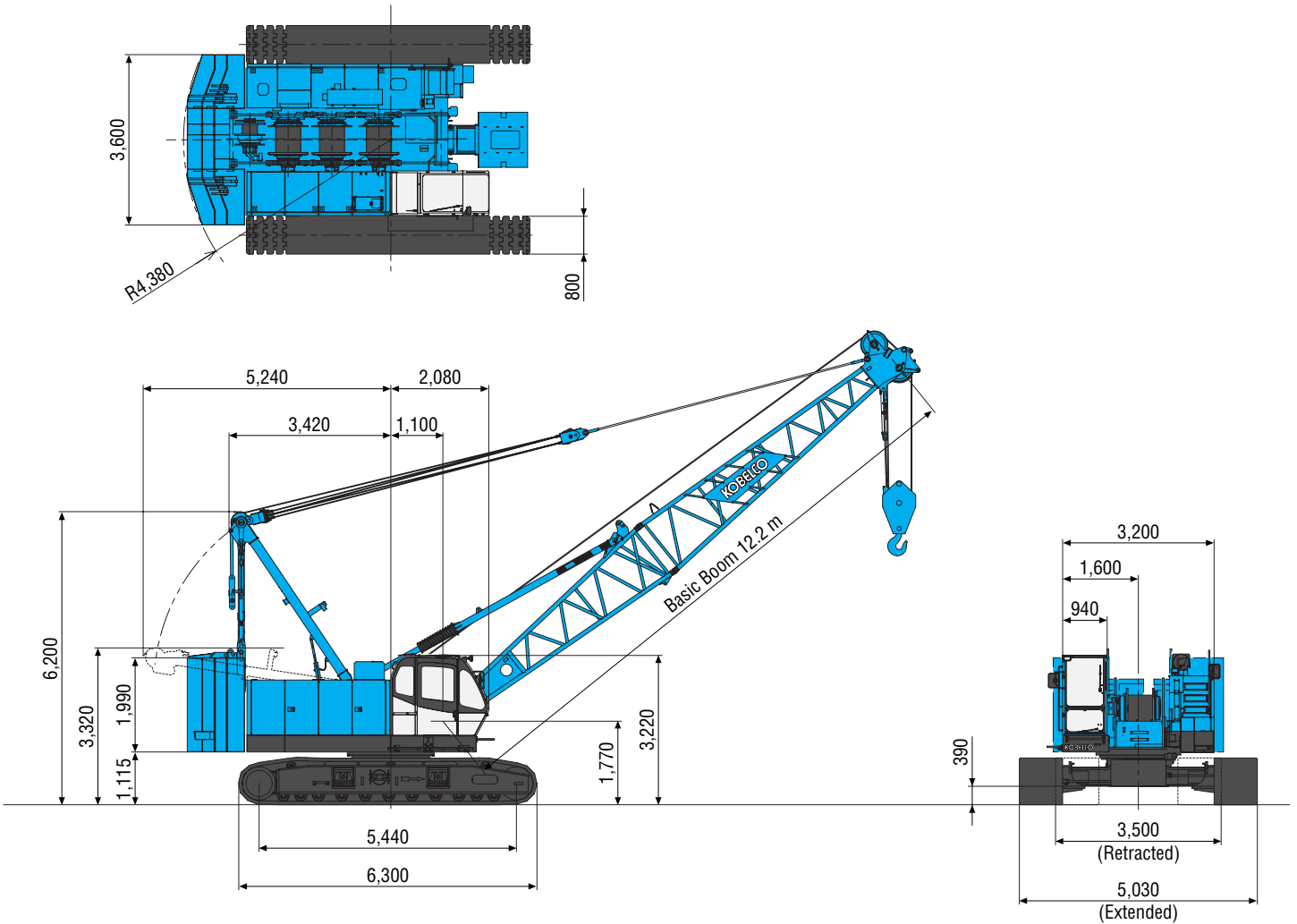
**Max. Lifting Capacity: 100 t x 3.0 m\***  
**Max. Crane Boom Length: 61.0 m**  
**Max. Fixed Jib Combination: 51.8 m + 18.3 m**

\*Auxiliary sheave is necessary.

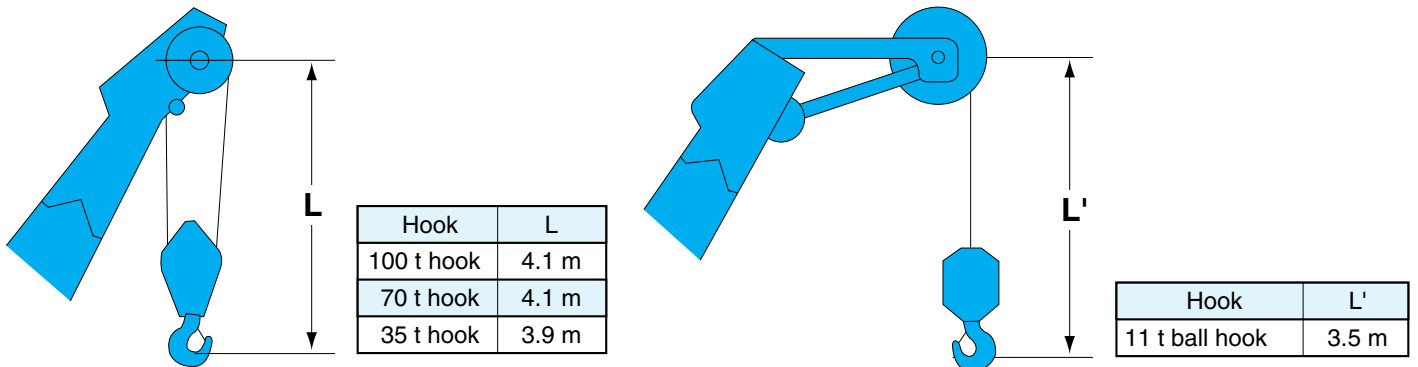
# GENERAL DIMENSIONS

## Crane Boom

(Unit: mm)

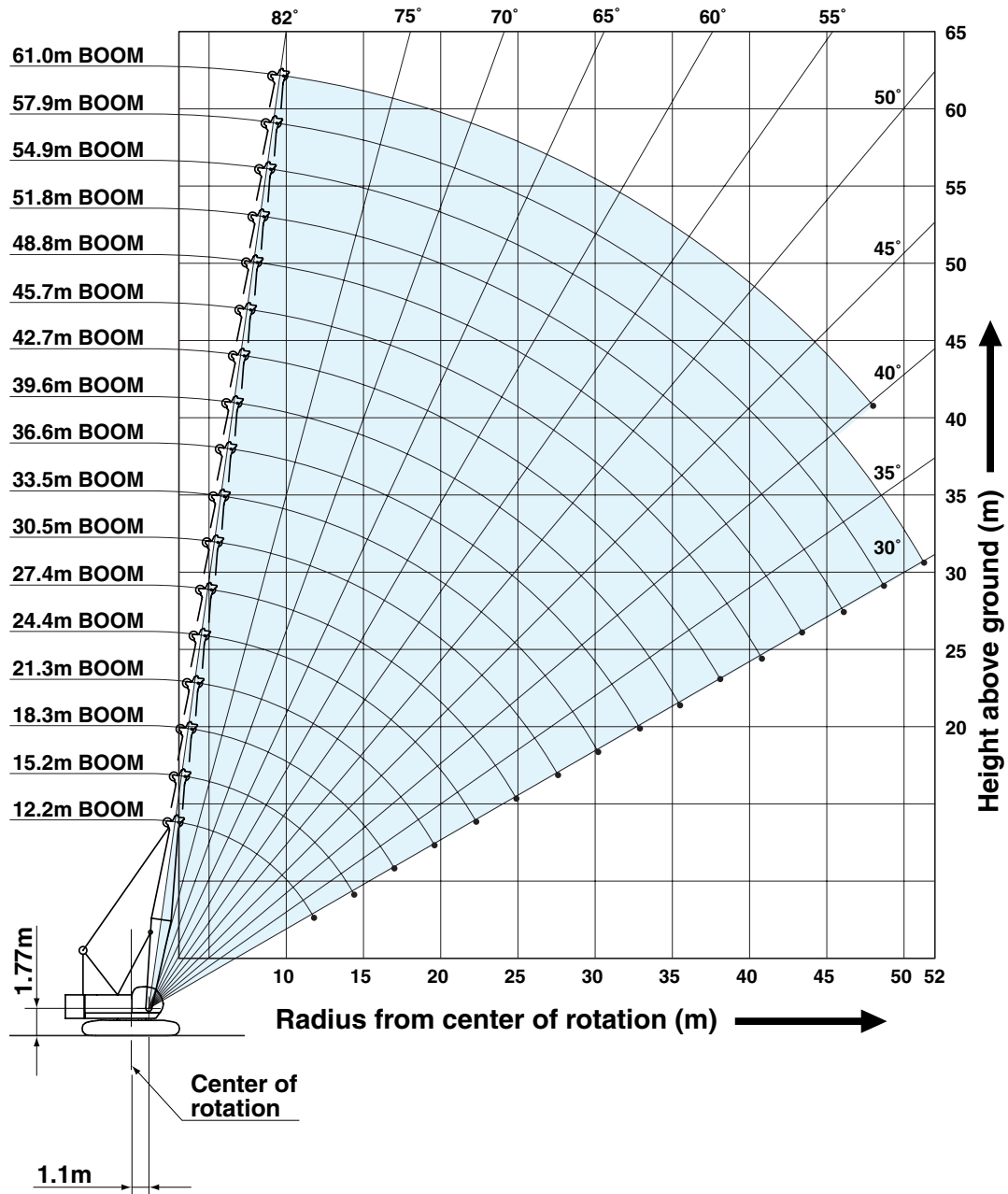


## Limit of Hook Lifting



# WORKING RANGES AND LIFTING CAPACITIES

## Crane Boom Working Ranges



### NOTES:

1. Ratings according to EN13000.
2. Ratings in metric tons for 360° working area.
3. Operating radius is the horizontal distance from center of rotation to a vertical line through the center of gravity of the load.
4. Weight of hook block (s), slings and other load handling accessories is included in rated load. Their total weight must be subtracted from rated load to obtain weight that can be lifted.
5. Ratings shown are based on freely suspended loads and make no allowance for such factors as wind effect on lifted load, ground conditions, out-of-level, operating speeds or any other condition that could be detrimental to the safe operation of this equipment. Operator, therefore, has the responsibility to judge the existing conditions and reduce lifted loads and operating speeds accordingly.
6. Ratings are for operation on a firm and level surface, up to 1% gradient.
7. At radii and boom lengths where no ratings are shown on chart, operation is not intended nor approved.
8. Boom inserts and guy lines must be arranged as shown in the "Operator's Manual".
9. Boom hoist reeving is 12 part line.
10. Gantry must be in raised position for all conditions.
11. Boom backstops are required for all boom lengths.
12. Crawler frames must be fully extended for all crane operations.
13. Ratings shown in   are determined by the strength of the boom or other structural component.
14. Instruction in the "Operator's Manual" must be strictly observed when operating the machine.
15. Crane boom ratings: Deduct weight of main hook block, slings, and all other load handling accessories from crane boom ratings shown.
16. Auxiliary sheave ratings for crane boom: Deduct weight of ball hook, slings, and all other load handling accessories from auxiliary sheave ratings for crane boom shown.
17. Crane boom lengths for auxiliary sheave mounting are 12.2 m to 57.9 m.



# Crane Boom Lifting Capacity

Unit: metric ton

Counterweight: 29.3 t, Carbody weight: 7.9 t

Working radius (m)	Boom length (m)																Working radius (m)			
	12.2	15.2	18.3	21.3	24.4	27.4	30.5	33.5	36.6	39.6	42.7	45.7	48.8	51.8	54.9	57.9		61.0		
3.0	100.0	3.4m/90.0																	3.0	
4.0	86.5	86.4	86.2	4.3m/75.0	4.7m/65.4														4.0	
5.0	70.1	69.9	68.2	64.8	61.5	5.1m/49.2	5.6m/47.9												5.0	
6.0	53.0	52.8	52.7	50.3	48.2	46.3	44.4	42.6	6.4m/37.3	6.8m/34.8									6.0	
7.0	45.6	45.4	44.0	42.2	40.6	39.2	37.8	36.5	35.3	34.1	7.3m/31.7	7.7m/28.0							7.0	
8.0	38.1	38.3	37.7	36.3	35.1	34.0	32.8	31.8	30.8	29.8	28.9	27.8	8.3m/21.9	8.5m/19.2					8.0	
9.0	32.1	32.5	32.4	31.8	30.8	29.9	28.9	28.1	27.3	26.5	25.7	25.0	20.8	18.6	9.1m/16.2	9.4m/13.9	9.8m/11.8		9.0	
10.0	27.1	28.1	28.0	27.9	27.4	26.7	25.8	25.1	24.5	23.8	23.1	22.5	19.5	17.4	15.2	13.4	11.7		10.0	
12.0	11.8m/19.6	22.1	22.0	21.8	21.7	21.7	21.2	20.7	20.2	19.6	19.1	18.6	17.3	15.4	13.3	11.7	10.2		12.0	
14.0		17.1	18.0	17.9	17.7	17.7	17.5	17.4	17.1	16.6	16.1	15.8	15.4	13.8	11.9	10.4	9.0		14.0	
16.0		14.4m/16.1	15.2	15.0	14.9	14.8	14.7	14.6	14.5	14.3	13.9	13.6	13.3	12.4	10.7	9.3	8.0		16.0	
18.0			17.0m/13.4	12.9	12.8	12.7	12.5	12.4	12.2	12.1	11.9	11.6	11.4	9.7	8.4	7.2			18.0	
20.0				19.6m/11.3	11.2	11.1	10.9	10.8	10.7	10.6	10.4	10.4	10.3	10.0	8.9	7.6	6.5		20.0	
22.0					9.9	9.8	9.6	9.5	9.4	9.3	9.1	9.0	9.0	8.9	8.1	7.0	5.9		22.0	
24.0					22.3m/9.7	8.7	8.5	8.4	8.3	8.2	8.1	8.0	7.9	7.8	7.5	6.4	5.4		24.0	
26.0						24.9m/8.3	7.6	7.6	7.5	7.3	7.2	7.1	7.0	6.9	6.8	5.9	4.9		26.0	
28.0							27.6m/7.1	6.8	6.7	6.6	6.4	6.3	6.3	6.1	6.0	5.4	4.5		28.0	
30.0								6.2	6.1	5.9	5.8	5.7	5.6	5.5	5.4	5.0	4.1		30.0	
32.0									30.2m/6.1	5.5	5.4	5.2	5.1	5.1	4.9	4.6	3.8		32.0	
34.0										32.9m/5.3	4.9	4.7	4.7	4.6	4.4	4.3	3.4		34.0	
36.0											35.5m/4.6	4.3	4.2	4.1	4.0	3.9	3.2		36.0	
38.0												4.0	3.9	3.8	3.6	3.5	3.4	2.9		38.0
40.0												38.1m/3.9	3.5	3.4	3.3	3.1	3.0	2.6		40.0
42.0													40.8m/3.4	3.1	3.0	2.8	2.7	2.3		42.0
44.0														43.4m/2.9	2.7	2.6	2.5	2.1		44.0
46.0															2.4	2.3	2.2	1.9		46.0
48.0															46.1m/2.4	2.0	1.9	1.7		48.0
50.0																48.7m/1.9	1.8			50.0
52.0																	51.3m/1.7			52.0
Reeves	8*	8*	7*	6	6	4	4	4	4	3	3	3	3	2	2	2	2	2	2	Reeves

Note:  
 Ratings according to EN13000. (Ratings 75% tipping load)  
 Ratings shown in   are determined by the strength of the boom or other structural components.  
 Refer to notes P8.

\*Auxiliary sheave is necessary.