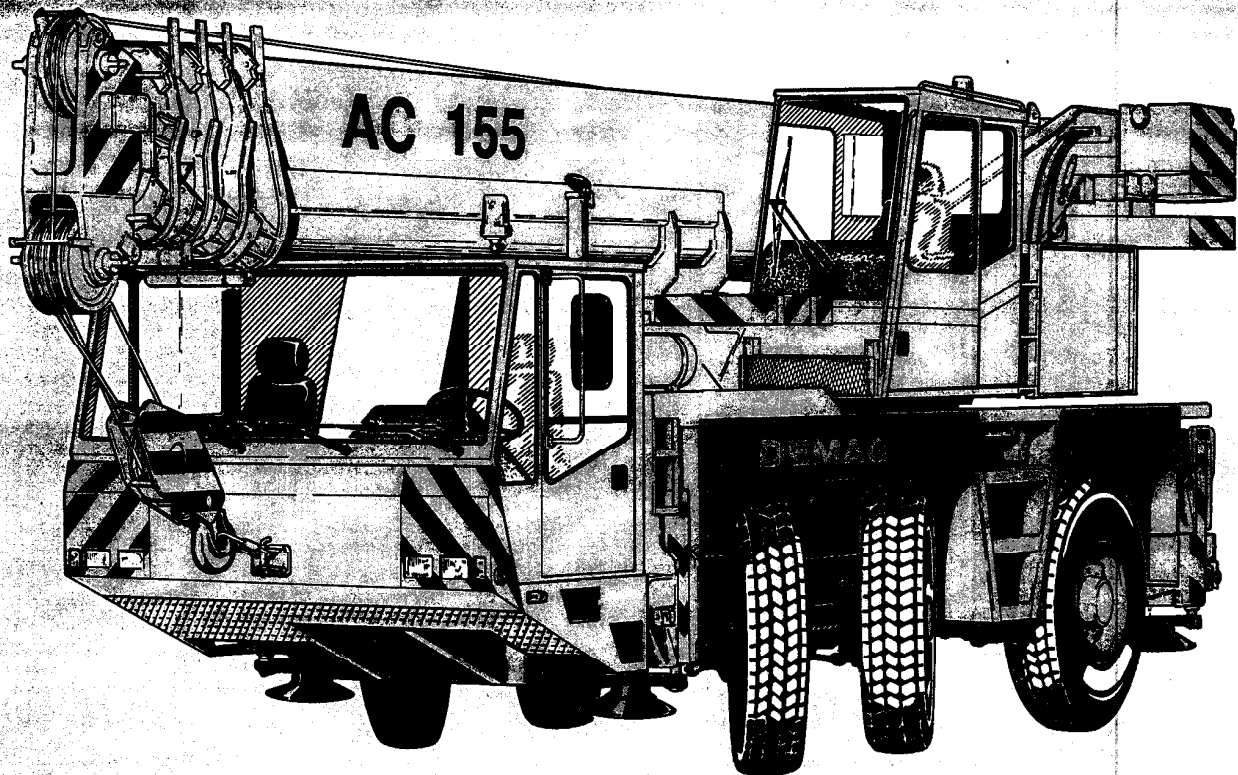
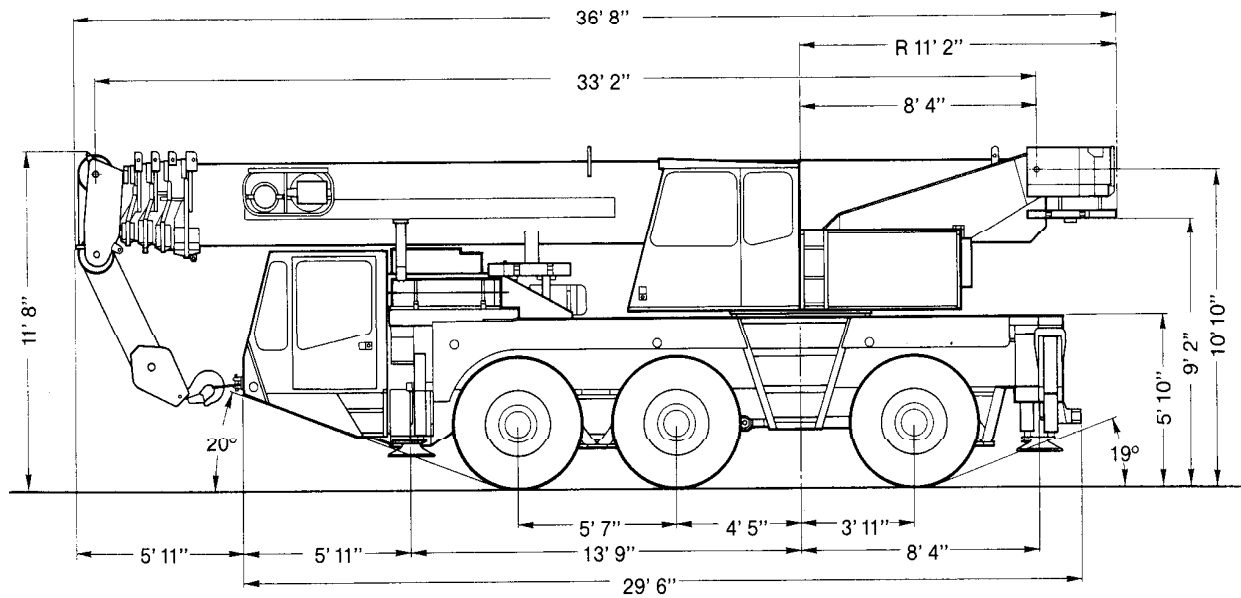
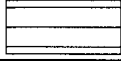



**60 ton All-Terrain Crane Demag AC 155**





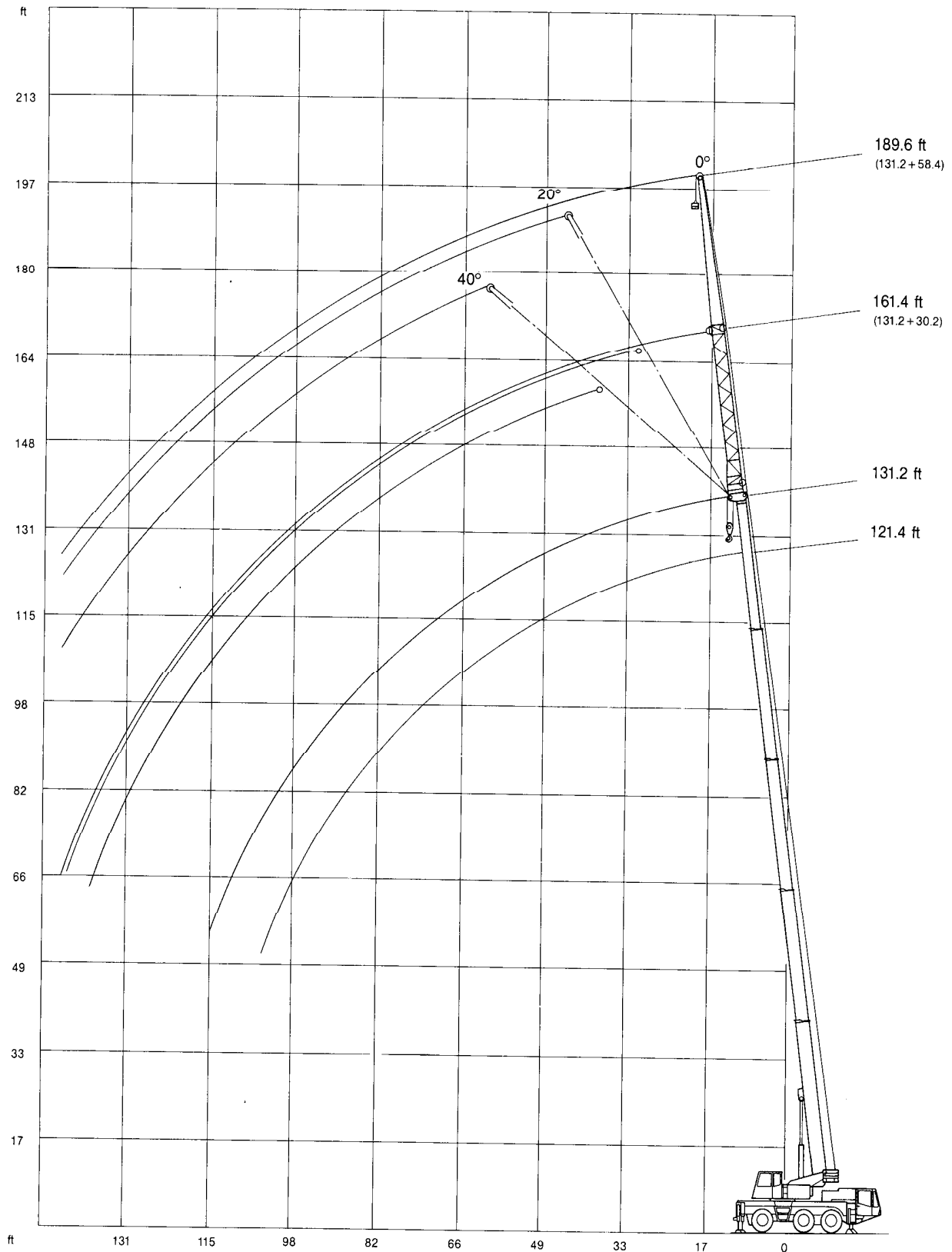
# Lifting capacities main boom in 1,000 lb

**19,850 lb**   **22' 4" x 21' 360°** **85%**

Radius ft	Main boom											0° over rear	
	33.1 ft	52.8 ft	52.8 ft	72.5 ft	72.5 ft	91.9 ft	91.9 ft	106.6 ft	111.5 ft	121.4 ft	131.2 ft	33.1 ft	52.8 ft
	1,000 lb											1,000 lb	
9	120.0*	-	-	-	-	-	-	-	-	-	-	-	-
10	106.4	-	-	-	-	-	-	-	-	-	-	27.2	-
11	100.5	67.9	38.8	-	-	-	-	-	-	-	-	25.2	26.1
13	90.9	67.9	50.0	50.0	50.0	-	-	-	-	-	-	21.0	22.9
15	81.8	67.9	38.8	38.8	36.3	31.5	26.6	-	-	-	-	19.0	20.2
16	78.1	67.9	38.8	38.8	36.3	31.5	26.6	16.9	22.9	-	-	17.7	19.0
19	66.2	62.1	38.8	38.4	36.3	31.5	26.6	16.9	22.9	19.4	-	14.9	16.0
23	50.5	47.9	38.8	37.9	33.9	29.9	25.1	16.9	22.4	19.1	15.8	11.8	12.9
26	-	38.6	38.8	37.3	31.7	28.5	23.9	16.9	21.8	18.7	15.8	-	11.1
29	-	31.8	35.2	34.6	29.4	26.9	22.5	16.9	21.2	18.3	15.5	-	9.7
33	-	24.9	28.8	28.6	26.9	25.0	20.8	16.9	20.2	17.6	15.1	-	7.8
39	-	18.6	22.2	21.8	22.9	21.8	18.6	15.5	19.0	16.5	14.7	-	5.8
46	-	-	-	16.4	17.6	16.7	16.2	13.6	16.7	15.4	13.8	-	-
52	-	-	-	13.2	14.5	13.4	14.6	12.0	13.4	13.8	12.6	-	-
59	-	-	-	10.6	11.9	10.6	12.1	10.1	10.8	10.8	11.2	-	-
65	-	-	-	-	-	8.9	10.3	9.1	9.2	9.2	9.2	-	-
72	-	-	-	-	-	7.1	8.8	7.9	7.3	7.3	7.3	-	-
79	-	-	-	-	-	5.6	7.2	7.0	5.6	6.1	6.1	-	-
85	-	-	-	-	-	-	-	6.6	4.8	4.9	4.9	-	-
92	-	-	-	-	-	-	-	5.4	3.9	3.9	3.9	-	-
98	-	-	-	-	-	-	-	-	2.9	3.1	3.1	-	-
105	-	-	-	-	-	-	-	-	-	2.2	2.4	-	-
111	-	-	-	-	-	-	-	-	-	-	1.8	-	-
Boom extension sequence %													
Tele 1	0	80	0	40	0	60	0	0	80	90	100	0	0
Tele 2	0	0	27	40	54	60	80	100	80	90	100	0	27
Tele 3	0	0	27	40	54	60	80	100	80	90	100	0	27
Tele 4	0	0	27	40	54	60	80	100	80	90	100	0	27

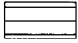

\*) over rear

# Working range main boom extension

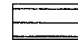



# Lifting capacities main boom extension in 1,000 lb

Main boom: 121.4 ft

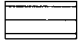

19,850 lb   22'4"x21' 360° 85%

Radius ft	Extension					
	30.2 ft			58.4 ft		
	0°	20°	40°	0°	20°	40°
	1,000 lb					
26	9.7	-	-	-	-	-
29	9.7	-	-	-	-	-
33	9.6	-	-	4.1	-	-
39	9.4	8.3	-	4.1	-	-
46	9.0	8.3	7.7	4.1	-	-
52	8.8	7.9	7.5	4.1	3.9	-
59	8.1	7.7	7.2	4.1	3.9	-
65	7.9	7.3	6.8	3.9	3.9	-
72	7.5	7.0	6.8	3.9	3.5	3.3
79	6.1	6.7	6.5	3.5	3.5	3.3
85	5.1	5.5	6.1	3.5	3.3	3.3
92	4.1	4.6	4.8	3.3	3.3	3.0
98	3.1	3.5	4.2	3.3	3.1	3.0
105	2.6	2.8	3.0	2.8	3.0	2.8
111	2.0	2.2	2.4	2.2	2.8	2.8
118	1.5	1.7	-	1.7	2.4	2.6
124	-	-	-	-	2.0	2.4
131	-	-	-	-	1.5	1.7

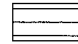

13,250 lb   22'4"x21' 360° 85%

Radius ft	Extension					
	30.2 ft			58.4 ft		
	0°	20°	40°	0°	20°	40°
	1,000 lb					
26	9.7	-	-	-	-	-
29	9.7	-	-	-	-	-
33	9.6	-	-	4.1	-	-
39	9.4	8.3	-	4.1	-	-
46	9.0	8.3	7.7	4.1	-	-
52	8.8	7.9	7.5	4.1	3.9	-
59	8.1	7.7	7.2	4.1	3.9	-
65	7.3	7.3	6.8	3.9	3.9	-
72	5.7	6.8	6.8	3.9	3.5	3.3
79	4.5	5.2	6.1	3.5	3.5	3.3
85	3.5	4.4	4.9	3.5	3.3	3.3
92	2.6	3.2	3.5	3.0	3.3	3.0
98	2.2	2.4	2.9	2.4	3.1	3.0
105	1.5	1.9	2.2	1.9	2.6	2.8
111	-	-	1.5	-	2.2	2.6
118	-	-	-	-	1.5	1.9
124	-	-	-	-	-	1.5

Main boom: 131.2 ft

19,850 lb   22'4"x21' 360° 85%

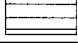
Radius ft	Extension					
	30.2 ft			58.4 ft		
	0°	20°	40°	0°	20°	40°
	1,000 lb					
29	7.2	-	-	-	-	-
33	7.2	-	-	2.4	-	-
39	7.2	7.2	-	2.4	-	-
46	7.2	7.2	-	2.4	-	-
52	7.2	7.2	6.8	2.4	2.4	-
59	7.0	6.8	6.6	2.4	2.4	-
65	6.8	6.6	6.2	2.4	2.4	-
72	6.6	6.3	5.7	2.4	2.4	2.4
79	6.1	5.7	5.5	2.4	2.4	2.4
85	4.9	5.5	5.3	2.4	2.4	2.4
92	3.9	4.6	4.8	2.4	2.4	2.4
98	3.1	3.5	4.0	2.4	2.4	2.4
105	2.4	2.8	3.0	2.4	2.4	2.4
111	2.0	2.2	2.4	2.2	2.4	2.2
118	1.5	1.7	1.9	1.7	2.4	2.2
124	-	-	-	-	2.0	2.2
131	-	-	-	-	-	1.7

13,250 lb   22'4"x21' 360° 85%

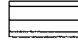
Radius ft	Extension					
	30.2 ft			58.4 ft		
	0°	20°	40°	0°	20°	40°
	1,000 lb					
29	7.2	-	-	-	-	-
33	7.2	-	-	2.4	-	-
39	7.2	7.2	-	2.4	-	-
46	7.2	7.2	-	2.4	-	-
52	7.2	7.2	6.8	2.4	2.4	-
59	7.0	6.8	6.6	2.4	2.4	-
65	6.8	6.6	6.2	2.4	2.4	-
72	5.7	6.3	5.7	2.4	2.4	2.4
79	4.5	5.2	5.4	2.4	2.4	2.4
85	3.5	4.2	4.6	2.4	2.4	2.4
92	2.6	3.2	3.5	2.4	2.4	2.4
98	2.0	2.4	2.9	2.2	2.4	2.4
105	1.5	1.7	2.2	1.7	2.4	2.4
111	-	-	1.5	-	2.0	2.2
118	-	-	-	-	1.6	1.9
124	-	-	-	-	-	1.5

# Lifting capacities main boom extension in 1,000 lb

Main boom: 121.4 ft

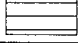
19,850 lb  22'4"x14'5" 360° 85%

Radius	Extension					
	30.2 ft			58.4 ft		
	0°	20°	40°	0°	20°	40°
ft	1,000 lb					
26	9.7	-	-	-	-	-
29	9.7	-	-	-	-	-
33	9.6	-	-	4.1	-	-
39	9.4	8.3	-	4.1	-	-
46	9.0	8.3	7.7	4.1	-	-
52	7.6	7.9	7.5	4.1	3.9	-
59	6.1	6.8	7.2	4.1	3.9	-
65	4.7	5.4	5.8	3.9	3.9	-
72	3.5	4.4	4.8	3.9	3.5	3.3
79	2.6	3.2	3.5	2.8	3.5	3.3
85	2.0	2.4	2.8	2.2	3.3	3.3
92	-	1.7	2.1	1.5	2.6	3.0
98	-	-	1.5	-	2.0	2.6
105	-	-	-	-	1.5	2.2
111	-	-	-	-	-	1.5

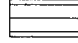
13,250 lb  22'4"x14'5" 360° 85%

Radius	Extension					
	30.2 ft			58.4 ft		
	0°	20°	40°	0°	20°	40°
ft	1,000 lb					
26	9.7	-	-	-	-	-
29	9.7	-	-	-	-	-
33	9.6	-	-	4.1	-	-
39	9.4	8.3	-	4.1	-	-
46	7.6	8.3	7.7	4.1	-	-
52	5.8	6.9	7.5	4.1	3.9	-
59	4.4	5.3	5.7	4.1	3.9	-
65	3.4	4.2	4.7	3.3	3.9	-
72	2.2	3.1	3.5	2.4	3.5	3.3
79	1.5	2.1	2.6	1.5	2.8	3.2
85	-	1.5	2.0	-	2.2	3.0
92	-	-	-	-	1.5	2.4
98	-	-	-	-	-	1.8

Main boom: 131.2 ft

19,850 lb  22'4"x14'5" 360° 85%

Radius	Extension					
	30.2 ft			58.4 ft		
	0°	20°	40°	0°	20°	40°
ft	1,000 lb					
29	7.2	-	-	-	-	-
33	7.2	-	-	2.4	-	-
39	7.2	7.2	-	2.4	-	-
46	7.2	7.2	-	2.4	-	-
52	7.2	7.2	6.8	2.4	2.4	-
59	5.7	6.8	6.6	2.4	2.4	-
65	4.7	5.4	5.8	2.4	2.4	-
72	3.5	4.2	4.6	2.4	2.4	2.4
79	2.6	3.2	3.5	2.4	2.4	2.4
85	2.0	2.4	2.8	2.0	2.4	2.4
92	-	1.7	2.1	-	2.4	2.4
98	-	-	1.5	-	1.8	2.4
105	-	-	-	-	-	1.9
111	-	-	-	-	-	1.5

13,250 lb  22'4"x14'5" 360° 85%

Radius	Extension					
	30.2 ft			58.4 ft		
	0°	20°	40°	0°	20°	40°
ft	1,000 lb					
29	7.2	-	-	-	-	-
33	7.2	-	-	2.4	-	-
39	7.2	7.2	-	2.4	-	-
46	7.2	7.2	-	2.4	-	-
52	5.8	6.8	6.9	2.4	2.4	-
59	4.2	5.3	5.7	2.4	2.4	-
65	2.9	4.0	4.7	2.4	2.4	-
72	2.0	2.8	3.5	1.9	2.4	2.4
79	-	1.9	2.3	-	2.4	2.4
85	-	-	1.7	-	2.0	2.4
92	-	-	-	-	-	2.1
98	-	-	-	-	-	1.5